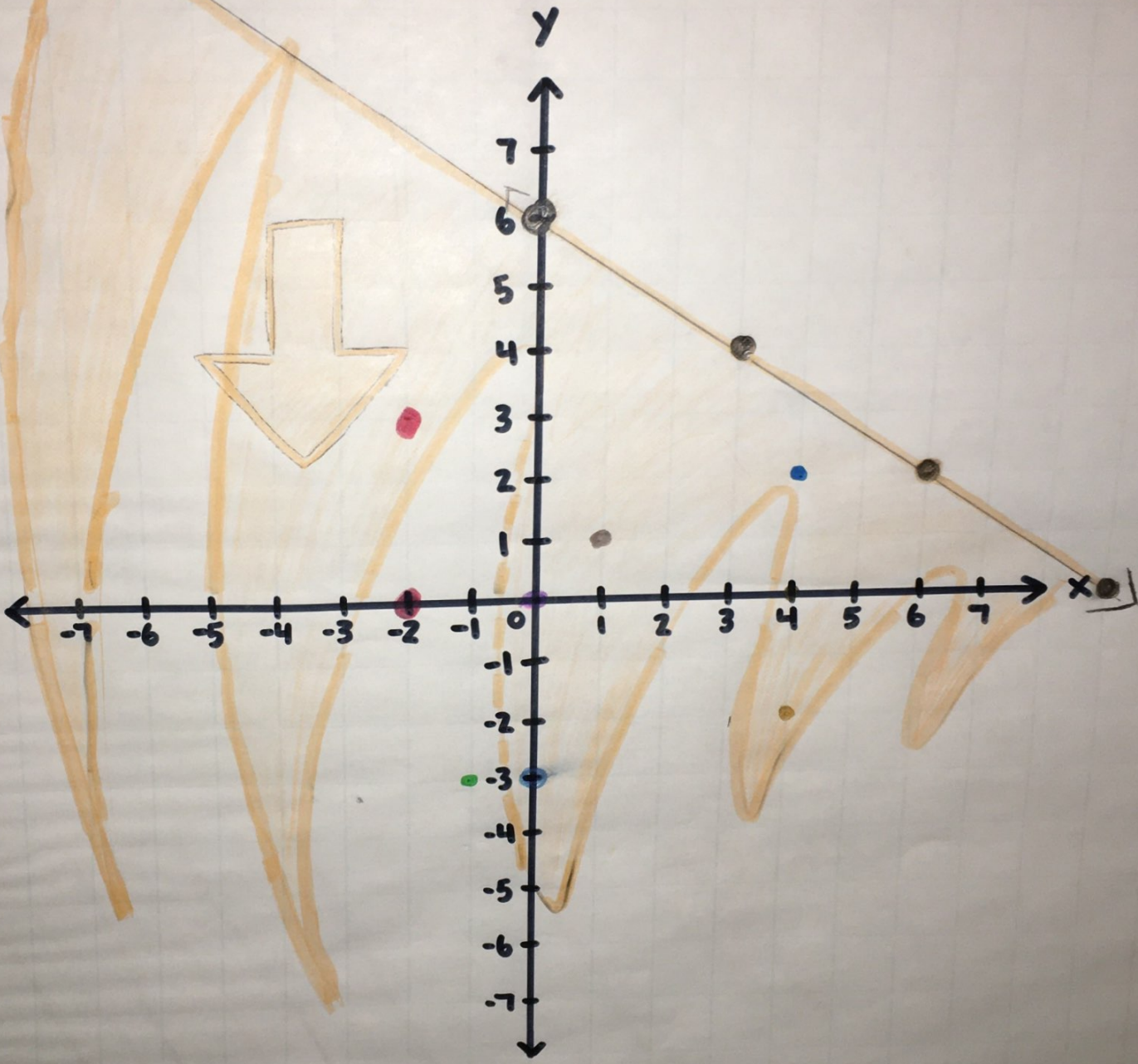
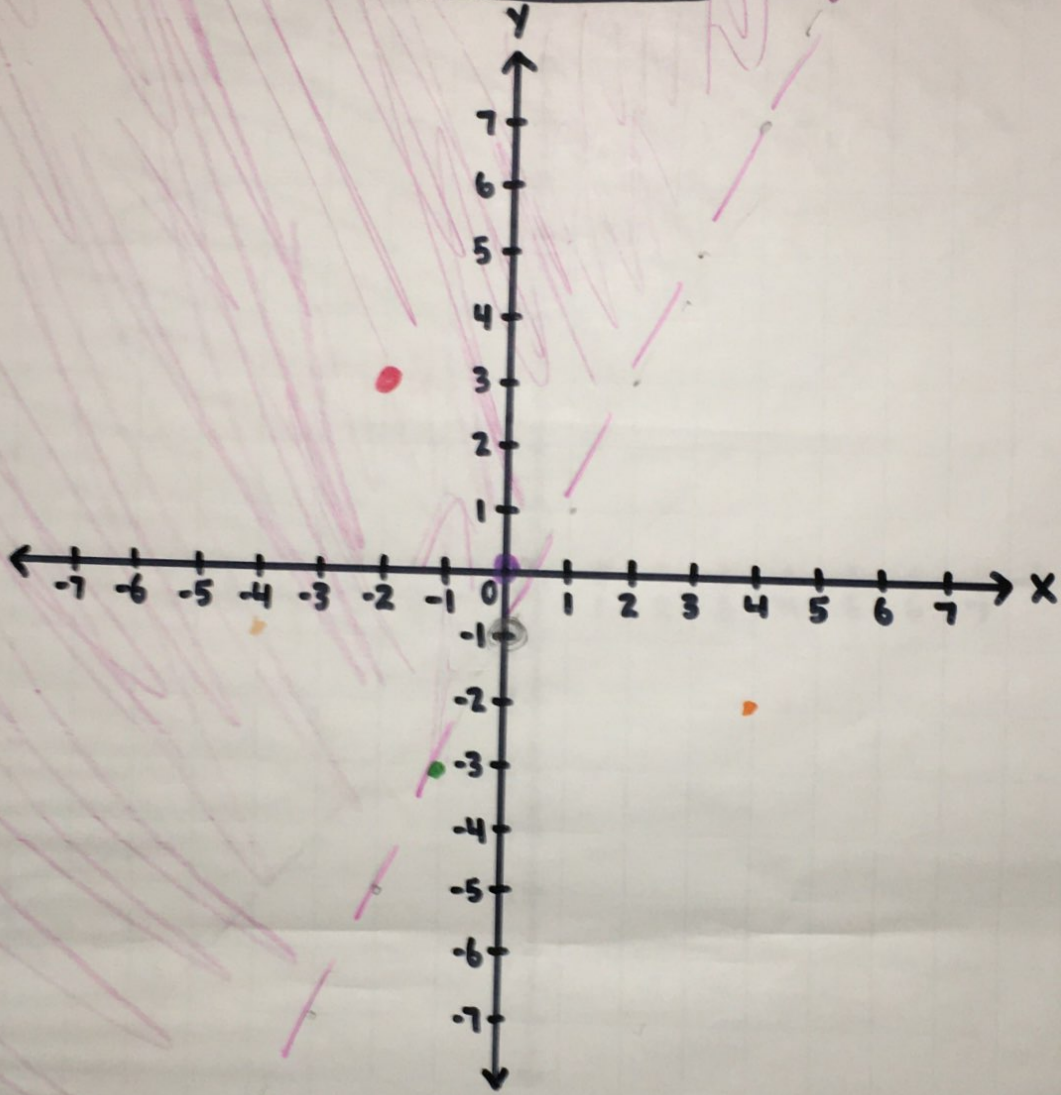


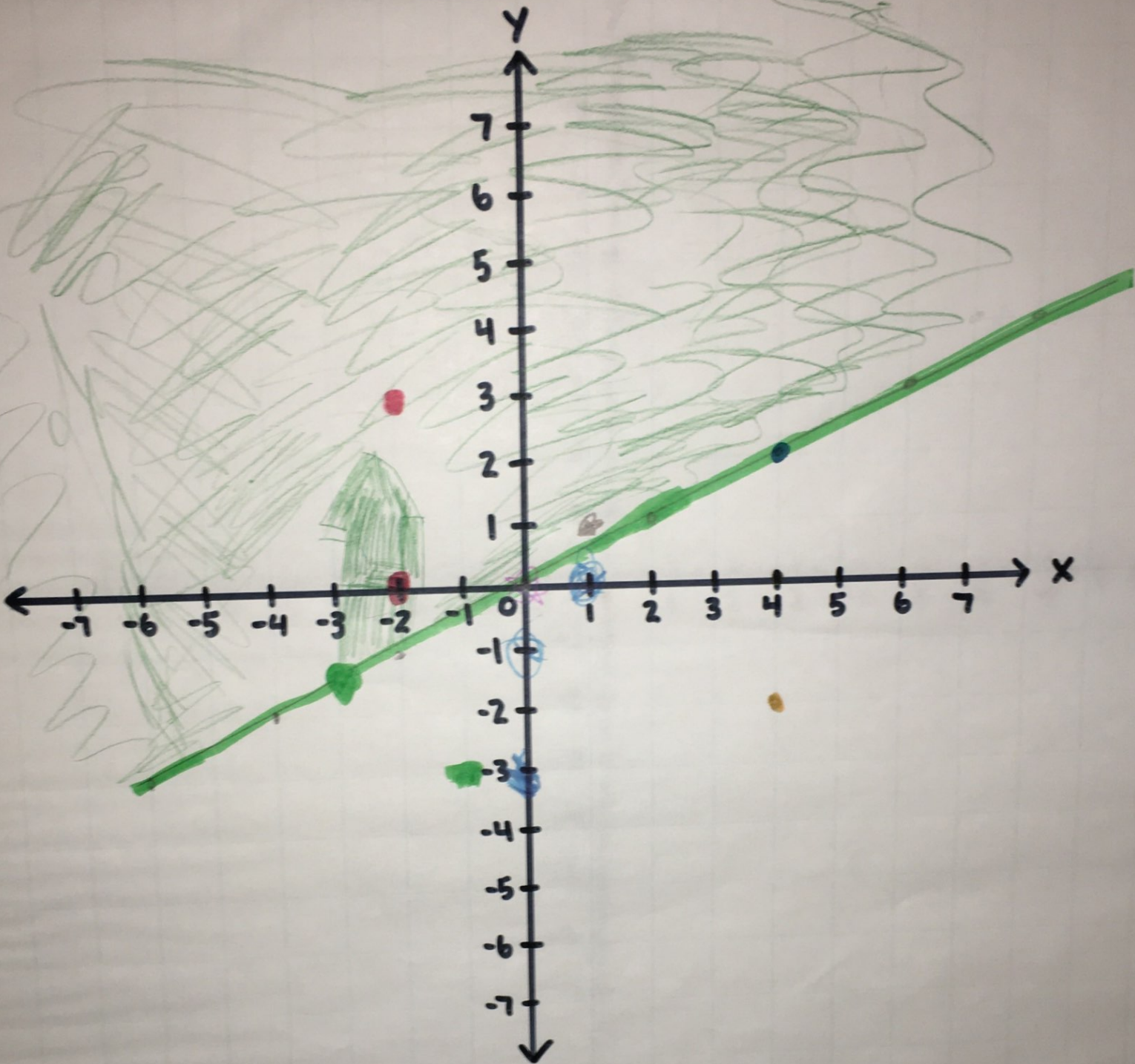
$$y \leq -\frac{2}{3}x + 6$$



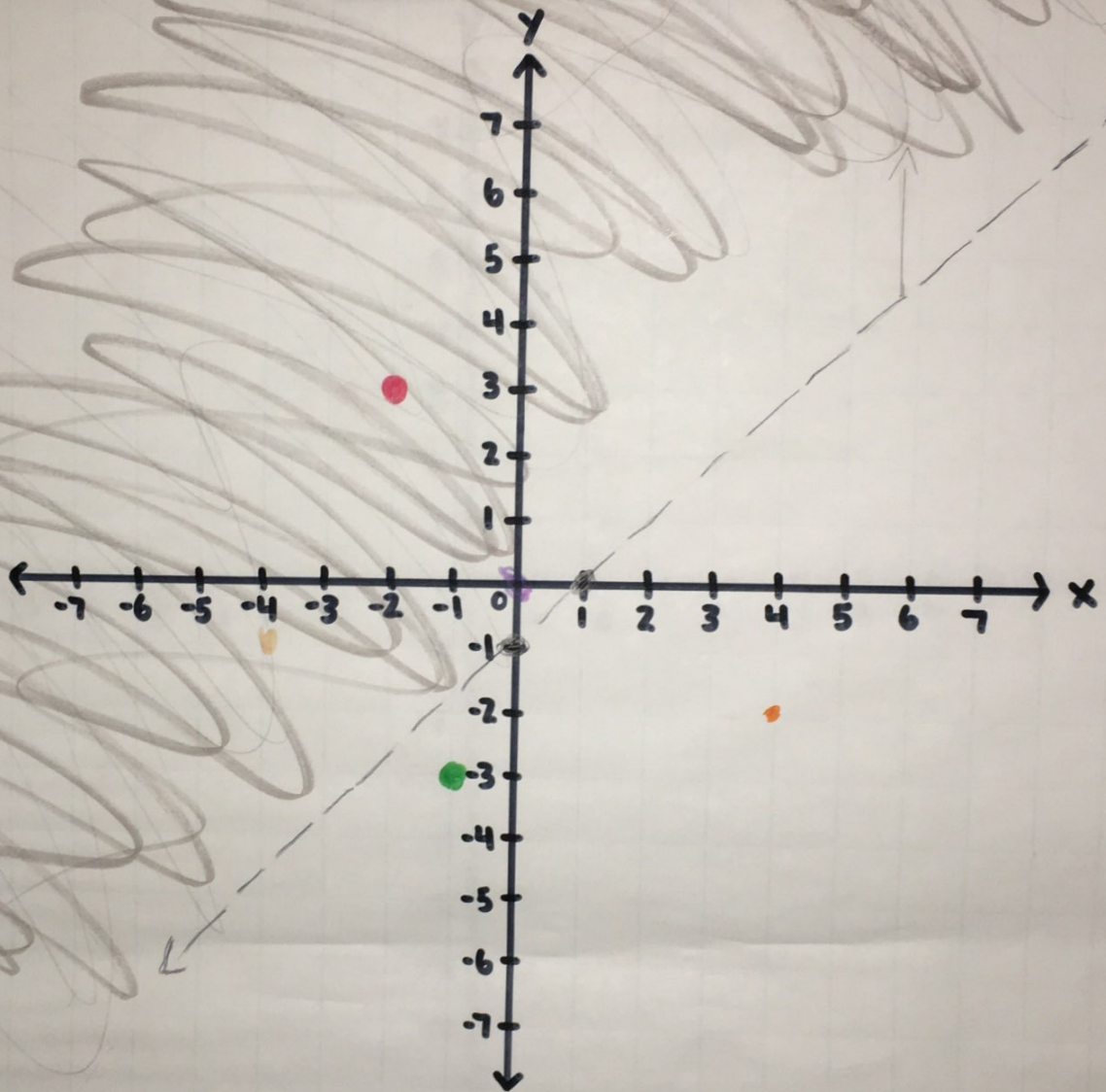
$$y > 2x - 1$$



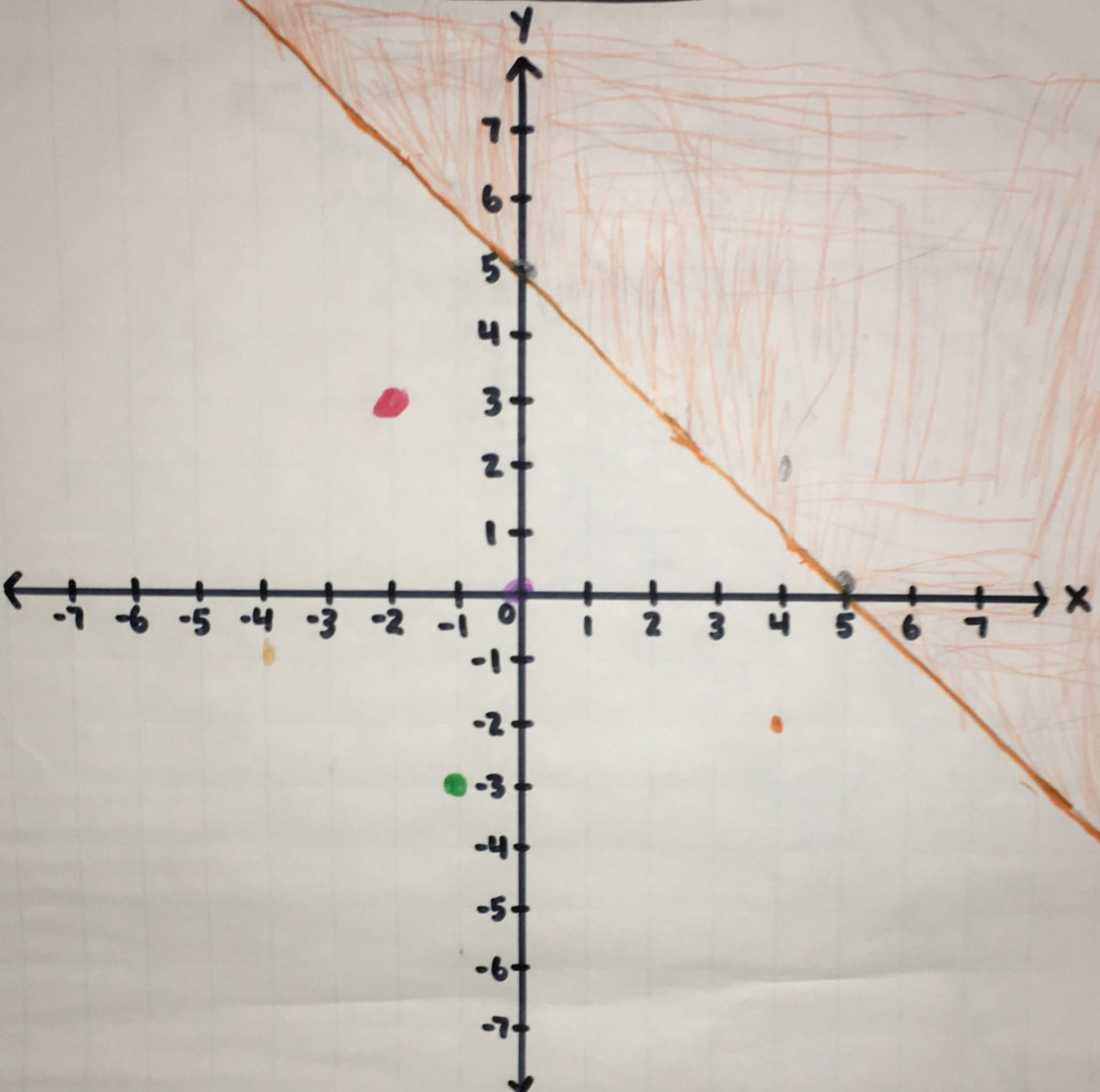
$$Y \geq \frac{1}{2} X$$



$$y > x - 1$$

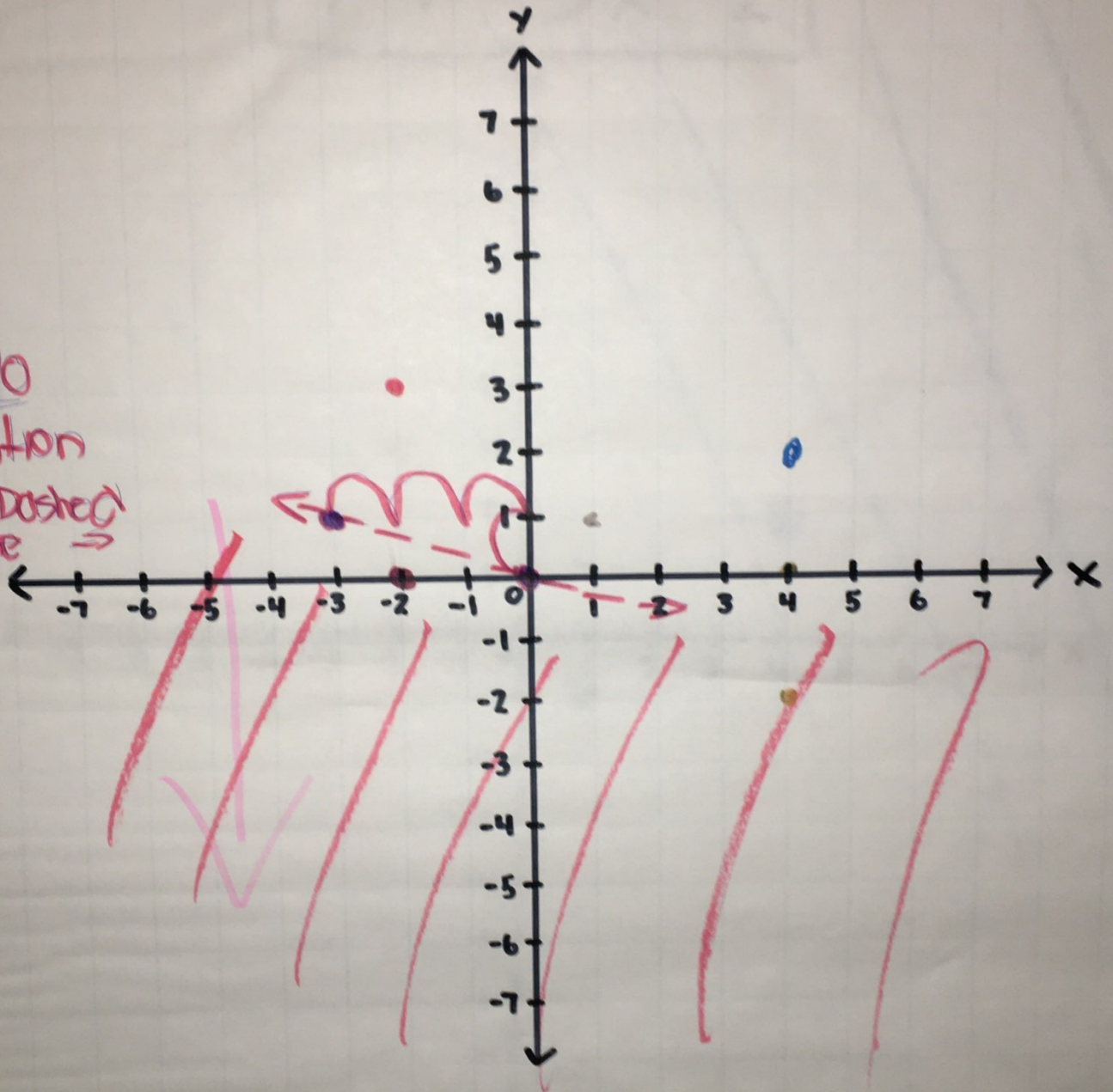


$$y \geq -x + 5$$



$$y < -\frac{1}{3}x$$

NO
Solution
on Dashed
line \rightarrow



$$y < 2x + 7$$

